

Strategies for Preventing and Ending Homelessness in Arlington County

Virginia Association of Local Human Services Officials

2024 Legislative Conference

September 30, 2024



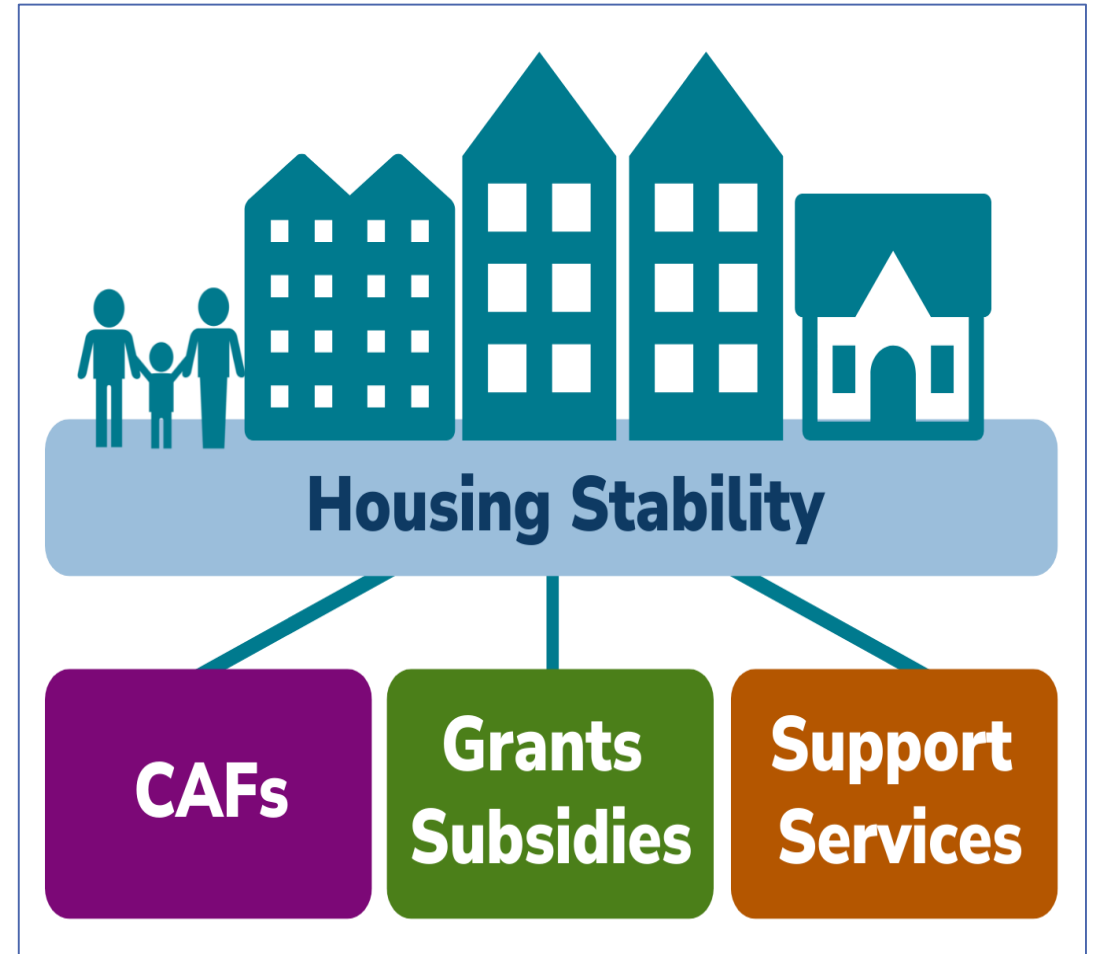
ARLINGTON
VIRGINIA



Overview of Strategies

- CAFs provide a supply of units for the Housing Grants and Permanent Supportive Housing Program

- Support services include housing-focused case management and financial support, including eviction prevention and utility and security deposit assistance



Overview of Strategies

Housing Subsidies:

- Housing Choice Voucher (HUD)
- Permanent Supportive Housing (DBHDS and Local)
- Housing Grants (100% Local)

Support Services:

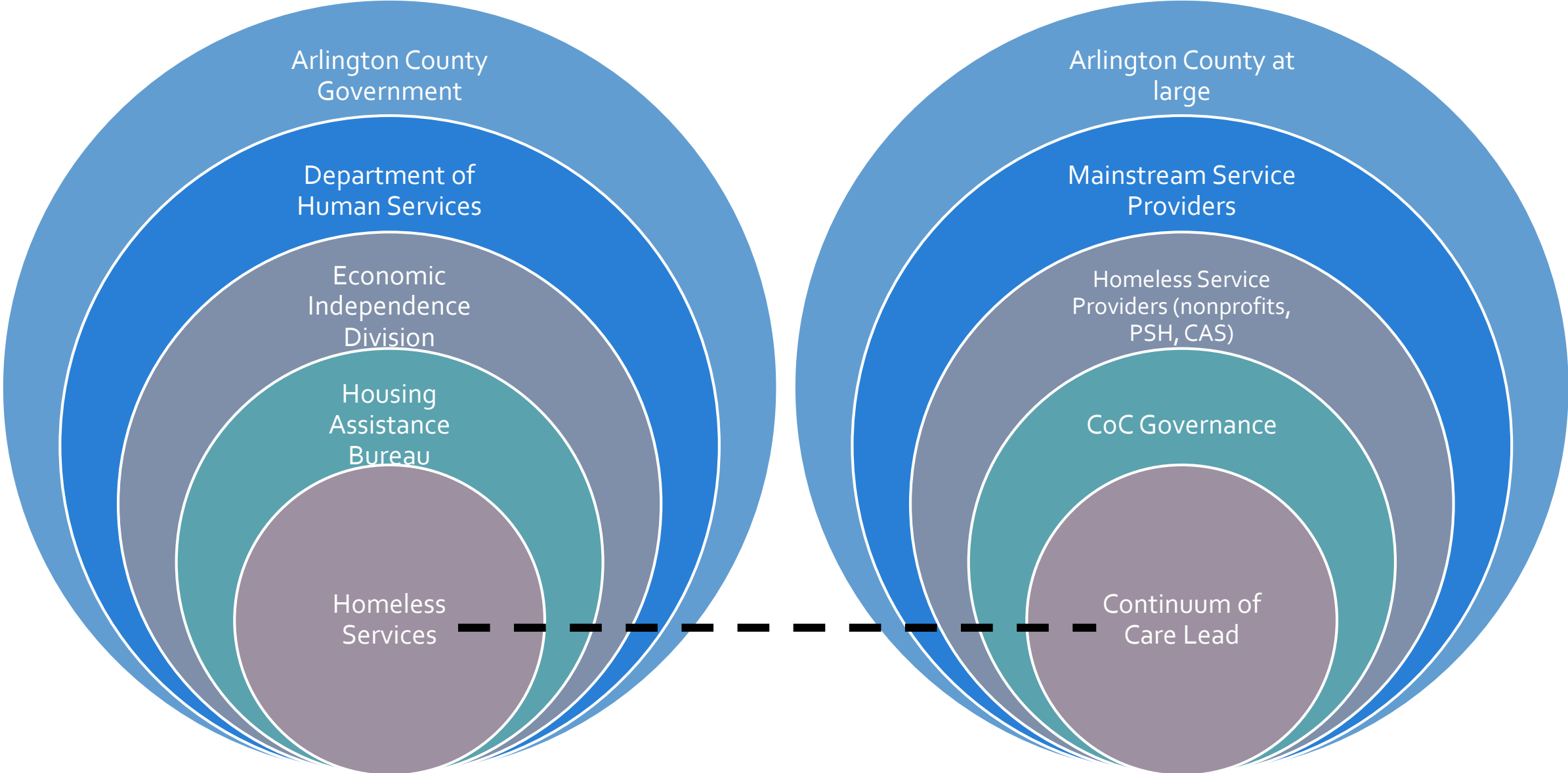
- **Continuum of Care**
- **Eviction Prevention**

Overview of Strategies: Arlington's Continuum of Care (CoC)

The term, Continuum of Care (CoC) is used interchangeably to describe various functions and roles of the homeless response system:

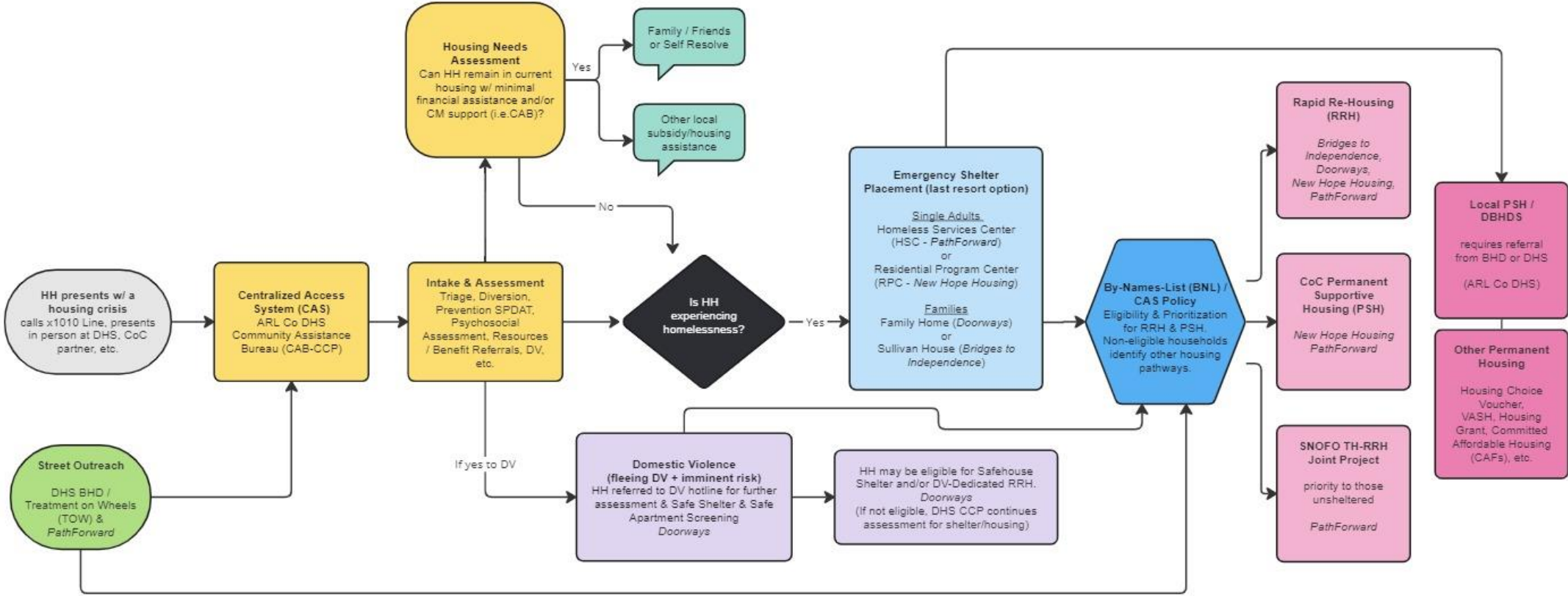
- The governing, organizing and planning body that works to establish and align priorities, resources and policies to address homelessness with a region.
- The collective resources and partners working to address homelessness from prevention, outreach, shelter, and housing.
- The lead entity with delegated responsibility for meeting applicable Federal (and State) responsibilities.

The Department of Human Services & The Continuum of Care (CoC)



Arlington's Continuum of Care (CoC)

Arlington County Continuum of Care (CoC) - Homeless Services Flow Chart



Updated March 2024

Arlington's CoC Values

Values/Principles

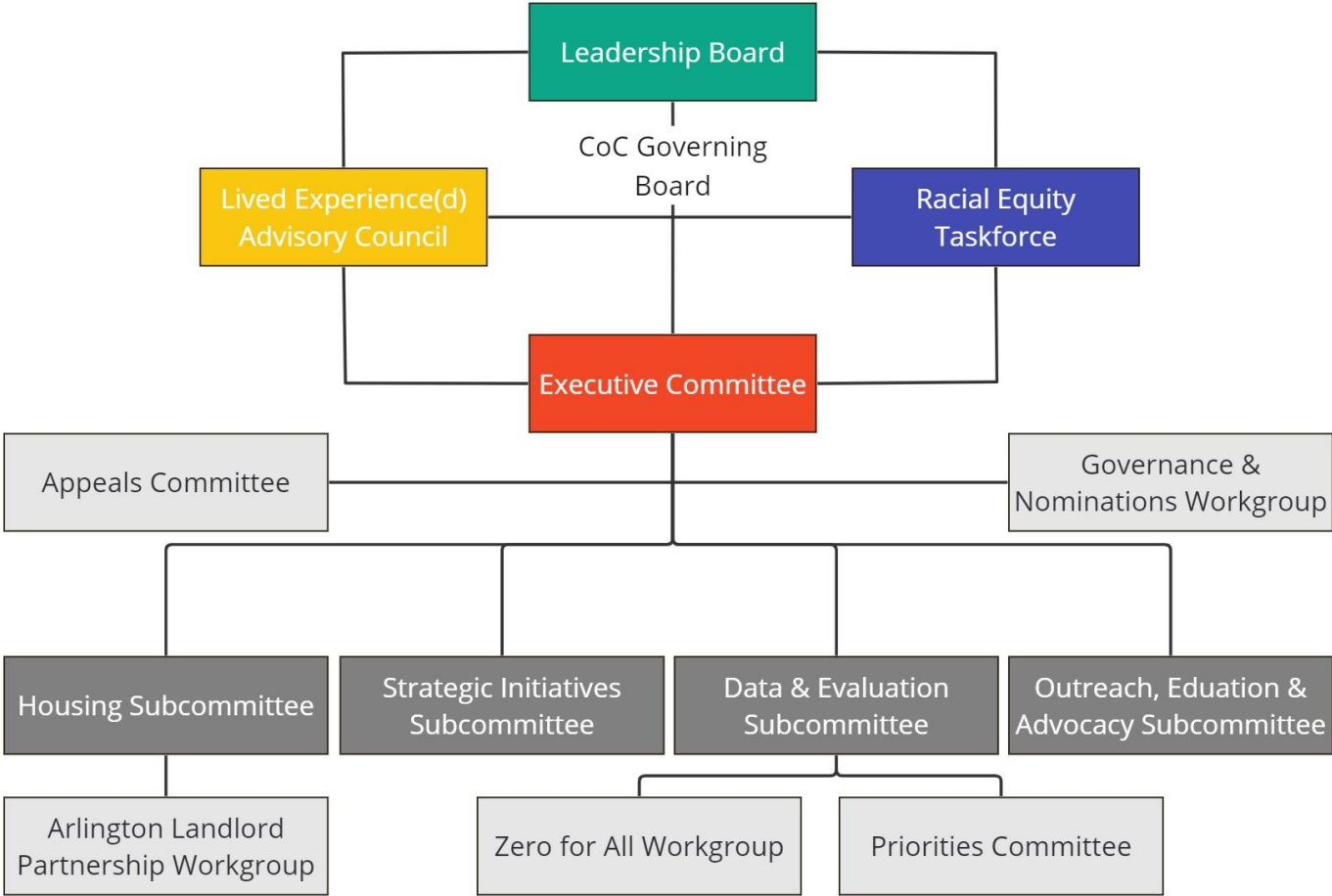
- Housing First Systems and Programs
- Low Barrier Models
- Person-Centered Approaches
- Leading with Racial Equity
- Policies and Practices Centering Voices of People with Lived Experience

Key Drivers/Expectations

- Community-driven processes and plans
- Transparent decision-making and processes
- Strong stewardship of public resources
- Maximize all public and private resources
- Data-driven decision-making

Arlington's CoC Governance Structure

Arlington CoC Governance Structure



Arlington's CoC Sub-Committees

Housing

- Facilitating access to and increasing the supply of affordable housing and rental assistance.
- Includes the Arlington Landlord Partnership (ALP) Workgroup.

Data & Evaluation (D&E)

- Maintaining data integrity, developing HMIS policies, conducting the PIT/HIC, and tracking CoC performance data.

Strategic Initiatives (SIC)

- Providing effective supportive services, increasing income through employment and benefits, and developing prevention strategies
- Leveraging resources for those engaged in behavioral health services and those with immigration issues
- Developing plan to address needs of TAYs

Outreach, Education & Advocacy (OEA)

- Educational campaigns that educate the community about homelessness and increases community engagement

Strategic Plan to End and Prevent Homelessness: “A Way Home for All”

Mission: The Arlington Continuum of Care works to make homelessness rare, brief and non-recurring by providing affordable and sustainable housing, tailored services, and by centering the voices and expertise of people with lived experience of homelessness.

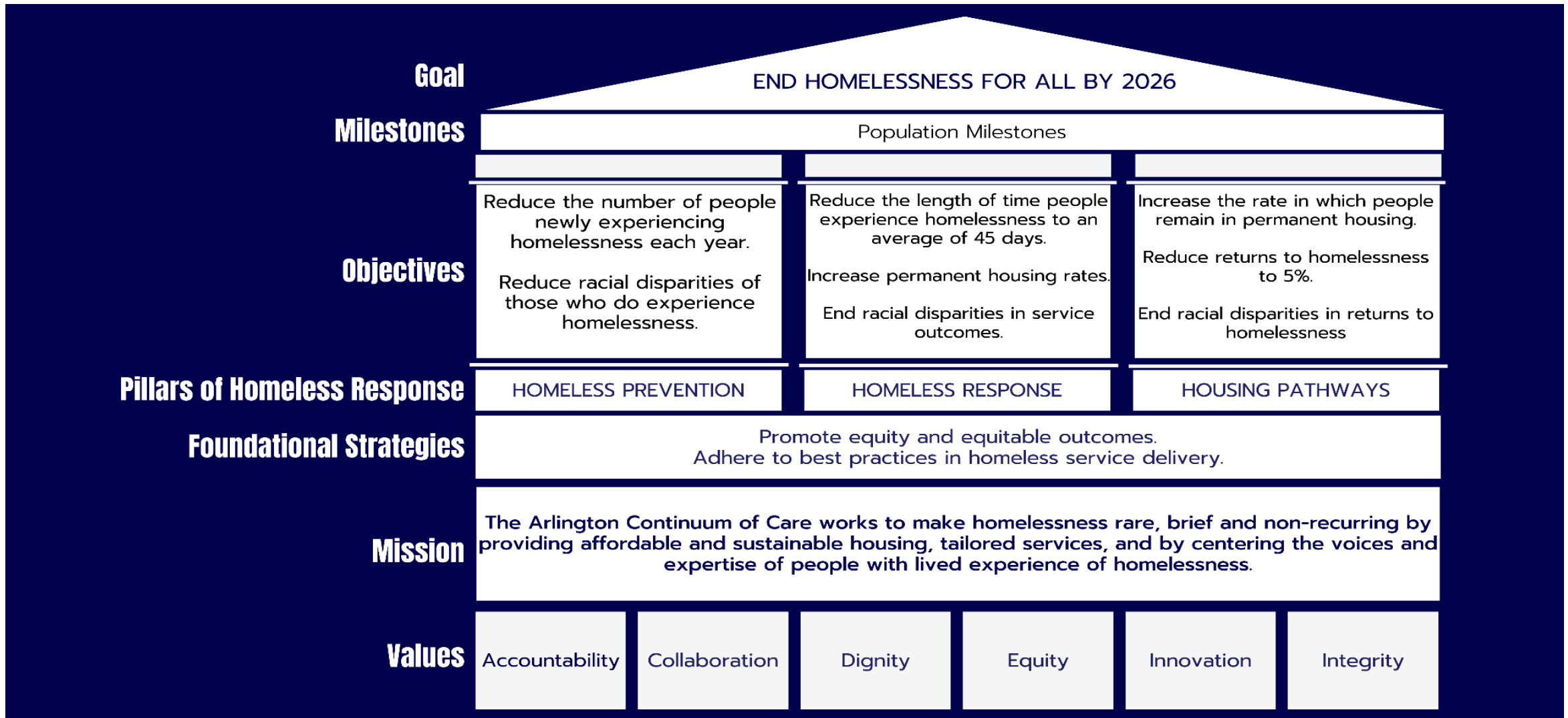


What does it mean to reach a functional end to homelessness?

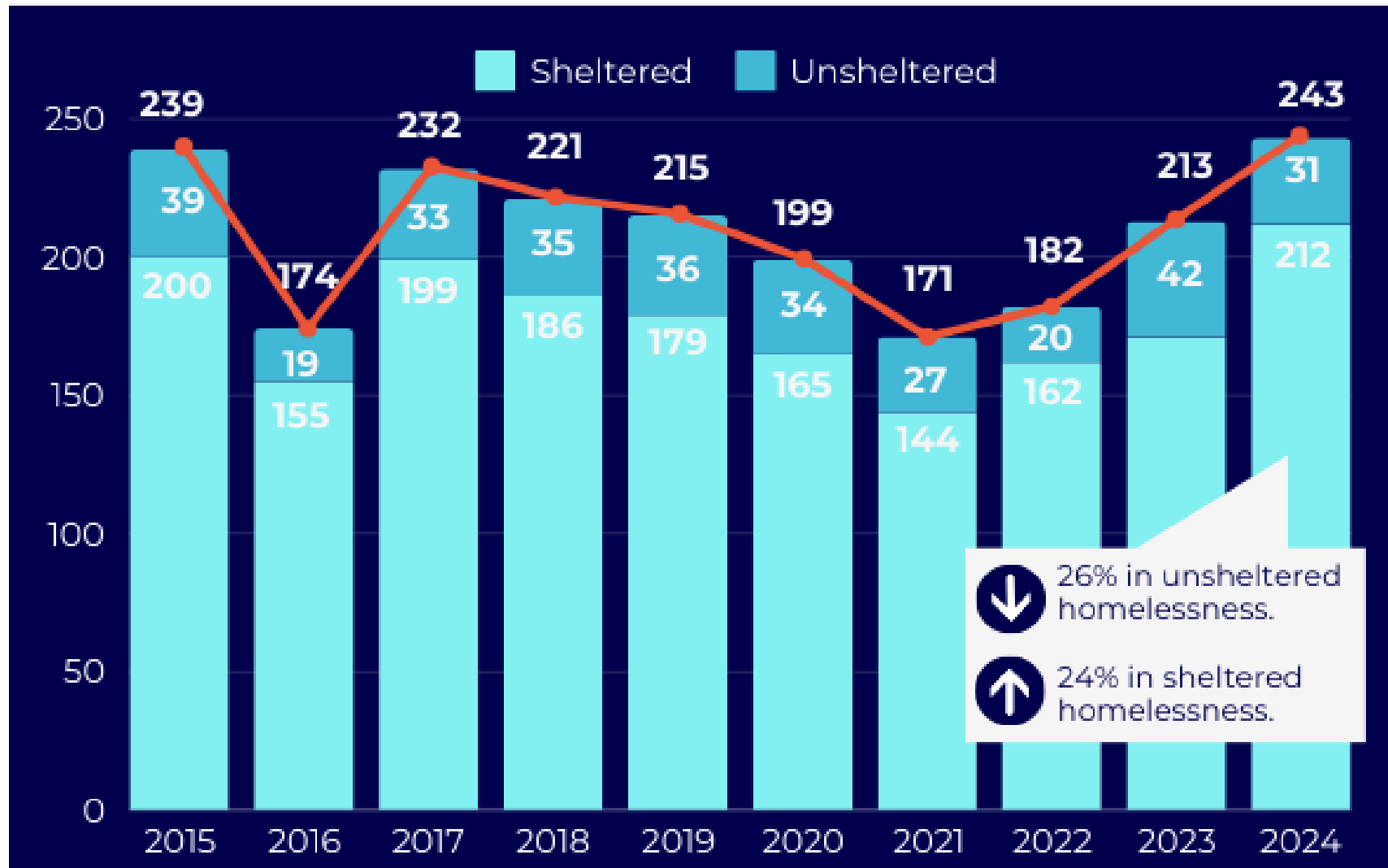
- Ending homelessness does not mean homelessness will be preventable for everyone.
- A functional end to homelessness or “Functional Zero” means that homelessness will occur rarely, be of a short duration, and typically will not recur. The number of people experiencing homelessness at a given time will be less than or equal to the average number of people who exit to permanent housing in a six-month period.

https://www.arlingtonva.us/files/sharedassets/public/v/1/public-assistance/documents/a-way-home-for-all-2023_1.pdf

Strategic Plan to End and Prevent Homelessness: “A Way Home for All”

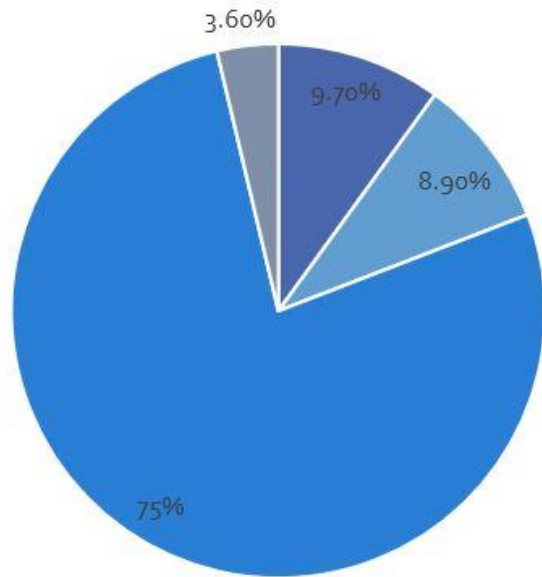


10 Year Snapshot of Arlington's Point-In-Time (PIT) Count



Demographics of Arlington versus Demographics in PIT Count

Arlington Census

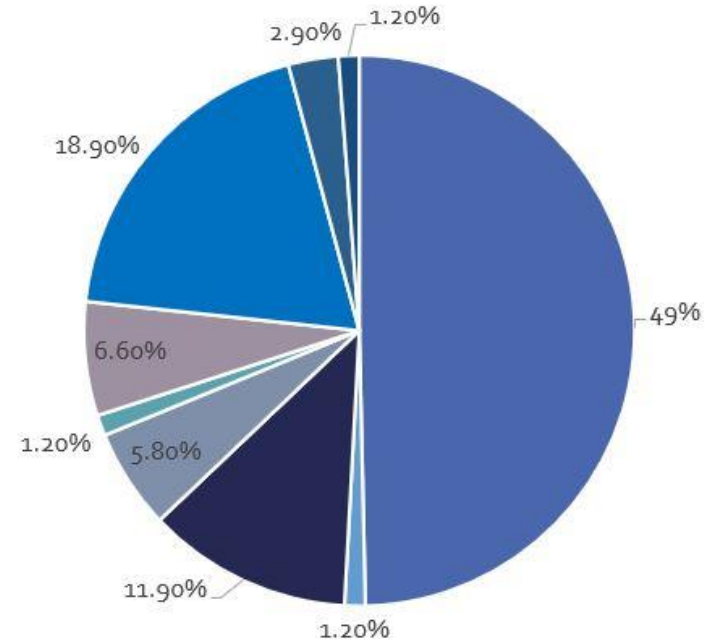


- Black / African American
- Hispanic Latin-X
- White
- Multip Racial

75% of Arlington residents identified as white while only 9.7% identified as white

50.2% of those surveyed during the PIT identified as Black / African American &/or Black / Hispanic, while only 18.9% identified as white

2024 PIT Count



- Black / African American or African
- Black & Hispanic
- Hispanic / Latin-X
- White & Hispanic
- Multi-Racial & Hispanic
- Multi-Racial & Non-Hispanic
- White
- Middle Eastern / North African
- Asian / Asian American

Overview of Strategies: Eviction Prevention

The Eviction Prevention (EP) Program stabilizes Arlington residents at risk of losing housing through financial assistance to prevent eviction and keep them safely housed. Program funding is currently a combination of mostly local funding, with some state funding.

Fiscal Year	Actual*	Unduplicated Households Served	Avg. Times Served	Total Payments Made	Avg. Payment Made
2019	\$1,162,171	896	-	-	-
2020	\$2,753,267	1,555	1.6	2,500	\$1,001
2021	\$7,508,007	1,586	2.6	4,091	\$1,230
2022	\$2,726,630	1,685	1.5	2,517	\$1,618
2023	\$8,076,136	1,898	1.9	3,527	\$2,131
2024*	\$3,995,437	1379	1.4	1931	\$2,069
2025*	\$ 1,019,460 (YTD)	492	1.1	547	\$1,908

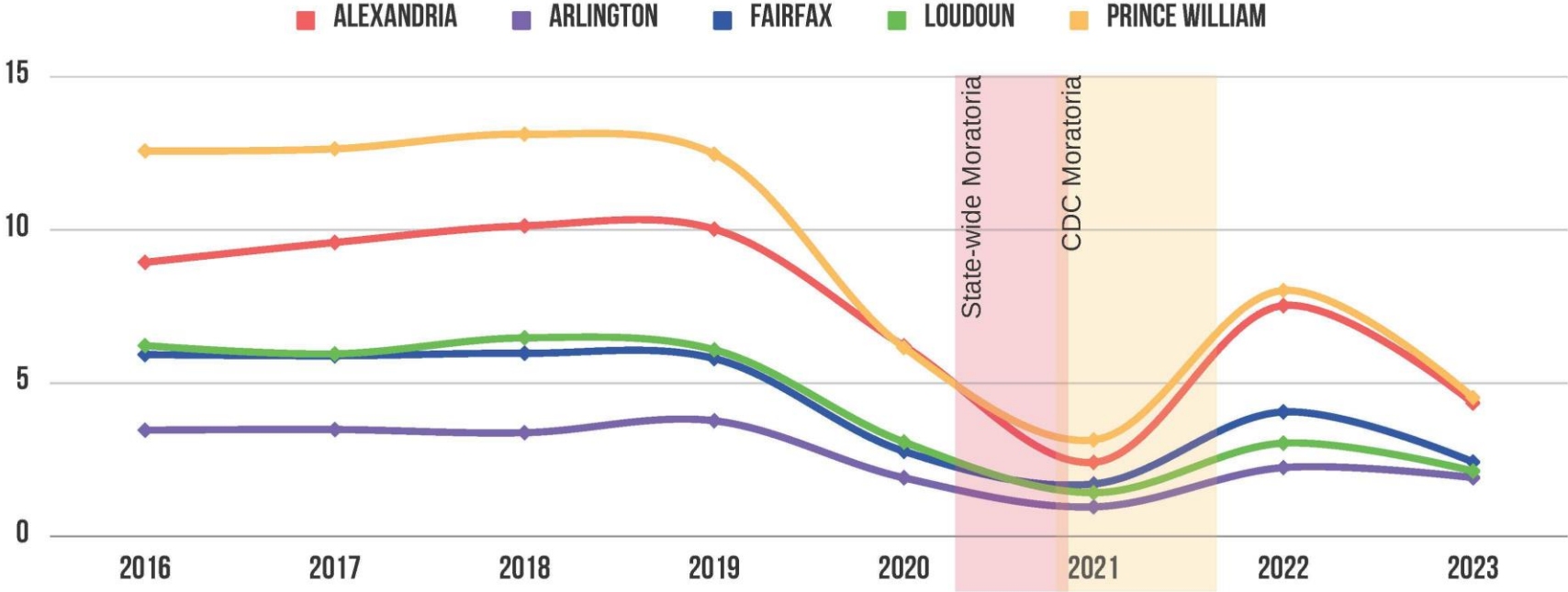
*FY 2024 was 100% local funds. FY 2025 is mostly local funds. State assistance ended in September 2023. Household annual cap implemented in FY 2023.

Eviction Rates in Arlington



EVICTON FILINGS PER 100 RENTER OCCUPIED HOUSEHOLDS PER YEAR

Civil Court Data Initiative. Legal Services Corporation, 2022. (accessed June 22, 2023)

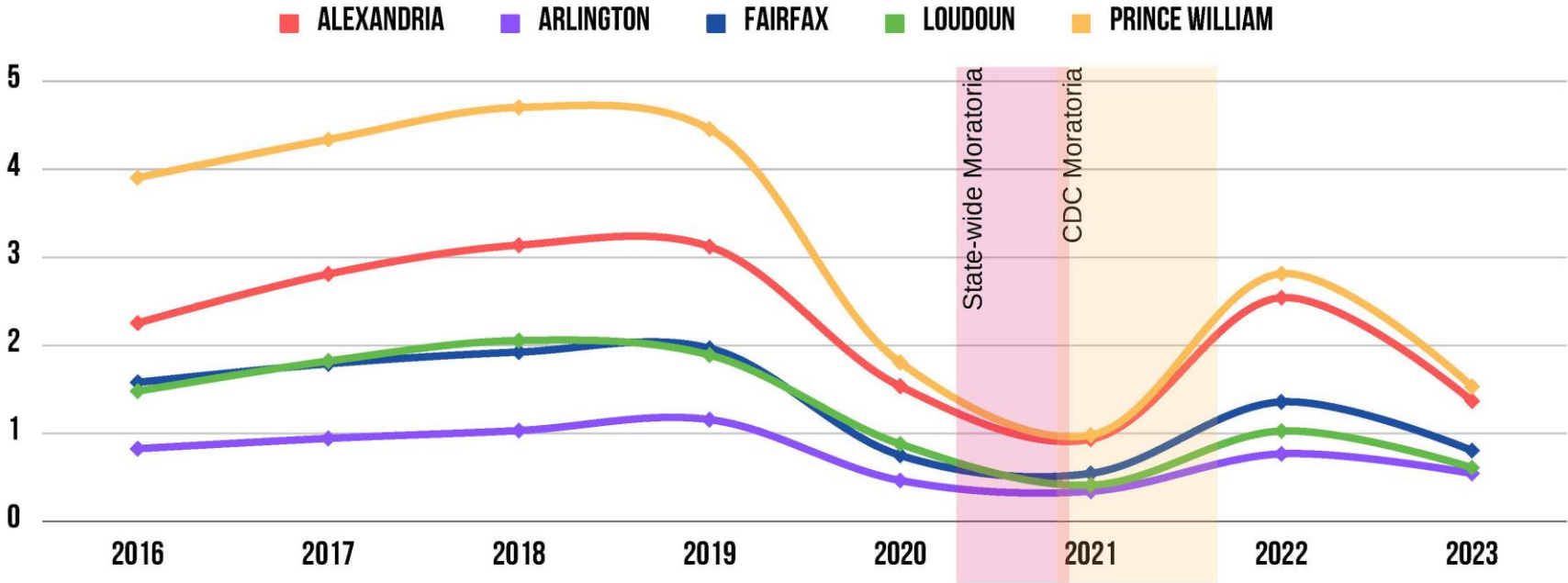


Eviction Rates in Arlington



DEFAULT JUDGEMENTS PER 100 RENTER OCCUPIED HOUSEHOLDS PER YEAR

Civil Court Data Initiative. Legal Services Corporation, 2022. (accessed June 22, 2023)



Questions? Comments?

Brooke Hammond Pérez
Economic Independence Division Director
Department of Human Services

bhammond-perez@arlingtonva.us



ARLINGTON
VIRGINIA